

Point-of-Care Ultrasonography

Michael J. Arnold, MD, and Christopher E. Jonas, DO

Uniformed Services University of the Health Sciences, Bethesda, Maryland

Rachel E. Carter, MD, Naval Hospital Jacksonville, Jacksonville, Florida

Point-of-care ultrasonography (POCUS) is performed by a physician at the bedside and is standard practice in obstetric, emergency, and musculoskeletal medicine. When compared with formal sonography, POCUS is equivalent in screening for abdominal aortic aneurysm and as accurate in diagnosing deep venous thrombosis. POCUS has high accuracy for diagnosing pneumonia and detecting acute decompensated heart failure but is less accurate than computed tomography for identifying pulmonary embolism. POCUS confirmation of intrauterine pregnancy rules out an ectopic pregnancy. In the third trimester of high-risk pregnancies, umbilical artery Doppler ultrasonography can improve perinatal outcomes. Musculoskeletal POCUS is used to diagnose and guide treatment of many joint and soft tissue conditions. It is as accurate as magnetic resonance imaging in the diagnosis of complete rotator cuff tears. Ultrasound guidance improves outcomes in the placement of central venous catheters and fluid drainage from body cavities and lumbar punctures. Ultrasonography can reduce the use of CT for diagnosis of appendicitis; however, negative scan results do not rule out disease. POCUS can accurately diagnose and rule out gallbladder pathology, and is effective for diagnosing urolithiasis. Focused cardiac ultrasonography can detect pericardial effusion and decreased systolic function, but is less accurate than lung ultrasonography at diagnosing acute heart failure. Limited evidence demonstrates a benefit of diagnosing testicular and gynecologic conditions. The American College of Emergency Physicians, the American Institute of Ultrasound in Medicine, the Society for Academic Emergency Medicine, the American College of Radiology, and others offer POCUS training. Training standards for POCUS have been defined for residency programs but are less established for credentialing. (*Am Fam Physician*. 2020;101(5):275-285. Copyright © 2020 American Academy of Family Physicians.)

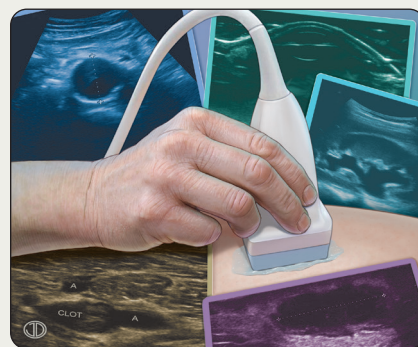


Illustration by Jonathan Dimes

Point-of-care ultrasonography (POCUS) is an evolving outpatient, inpatient, and urgent care diagnostic tool. Diagnostic timing decreases, and accuracy increases when POCUS augments the clinical examination and procedures. The use of POCUS in primary care is increasing because it reduces cost, radiation exposure, and imaging delays, and increases patient satisfaction. POCUS is also useful in resource-limited settings. The instruction of POCUS is increasing in family medicine residency programs, and resources for practicing physicians exist. However, widespread POCUS use is limited by the training burden

required to gain and maintain skills. This article summarizes the strongest evidence for the effectiveness of POCUS in specific clinical conditions.

Clinical Conditions with Strong, Consistent Evidence Supporting Use of POCUS

ABDOMINAL AORTIC ANEURYSM SCREENING

One-time abdominal aortic aneurysm (AAA) screening is recommended for men 65 to 75 years of age who smoked at least 100 cigarettes during their lifetime, with consideration for screening men who never smoked.¹ Screening reduces aneurysm rupture mortality by 34% (number needed to screen = 311 to prevent one death).² In a 2012 study, only 31% of eligible patients were screened and most used more costly or radiation-intensive imaging.³

Two studies with 80 and 45 participants yielded 100% sensitivity and specificity for AAA screening with POCUS in primary care.^{4,5} A meta-analysis of seven emergency department POC ultrasound studies demonstrated 99%

Additional content at <https://www.aafp.org/afp/2020/0301/p275.html>.

CME This clinical content conforms to AAFP criteria for continuing medical education (CME). See CME Quiz on page 268.

Author disclosure: No relevant financial affiliations.

SORT: KEY RECOMMENDATIONS FOR PRACTICE

Clinical recommendation	Evidence rating	Comments
Screening for AAA can be performed accurately with POCUS. ⁴⁻⁸	C	Multiple disease-oriented studies; meta-analysis
Lung ultrasonography is accurate for determining the source of acute respiratory distress. ²⁴⁻²⁸	C	Disease-oriented studies; systematic reviews
Ultrasonography differentiates cellulitis from abscess more accurately than clinical evaluation and reduces inappropriate incision and drainage and failure to resolve post drainage. ^{17,36}	C	Systematic review of eight disease-oriented cohort studies; case-control studies; retrospective review
Ultrasonography can diagnose complete rotator cuff tears with the same accuracy as magnetic resonance imaging. ³⁰	C	Cochrane review of 20 disease-oriented studies
POCUS lacks the sensitivity to rule out appendicitis but is diagnostic with a positive scan. ^{39,40}	C	Systematic review; meta-analysis
POCUS can rule out ectopic pregnancy by intrauterine pregnancy visualization. ⁵⁵	A	Meta-analysis of 10 studies

AAA = abdominal aortic aneurysm; POCUS = point-of-care ultrasonography.

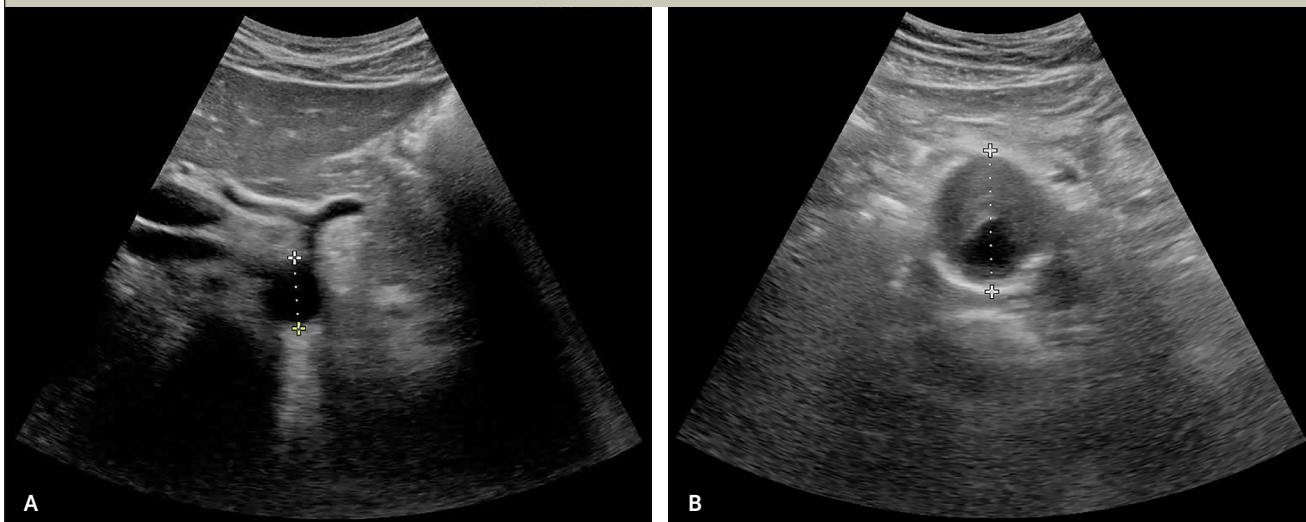
A = consistent, good-quality patient-oriented evidence; **B** = inconsistent or limited-quality patient-oriented evidence; **C** = consensus, disease-oriented evidence, usual practice, expert opinion, or case series. For information about the SORT evidence rating system, go to <https://www.aafp.org/afpsort>.

sensitivity and 98% specificity for AAA diagnosis.⁶ In another trial, a medical student identified 15 of 16 aneurysms in 57 patients after three hours of training; and the missed aneurysm was an inconclusive study.⁷ In a large study of primary care AAA screening with 25 hours of physician training, scans were completed in an average of four minutes but showed a 21% false-positive rate; however, misdiagnosed scans showed abnormalities such as aortic ectasia or luminal thrombus.⁸ *Figure 1* shows POCUS scans of a normal abdominal aorta and an abdominal aortic aneurysm.

DEEP VENOUS THROMBOSIS

Proximal compression leg ultrasonography accurately diagnoses deep venous thrombosis (DVT).⁹ Emergency department POCUS of common femoral and popliteal veins have 96% sensitivity and 97% specificity for detecting DVT.⁹ After two hours of training, primary care physicians diagnosed DVT with 90% sensitivity

FIGURE 1



Screening for an abdominal aortic aneurysm. (A) Normal caliber aorta (2.38 cm) in the proximal aorta at the level of the celiac trunk. (B) Aneurysm (4.72 cm) within the midabdominal aorta.

Note: Normal is less than 3 cm; ongoing monitoring for 3 to 4.9 cm; surgical referral for 5 cm or greater or 2-cm change over one year.

and 97% specificity.¹⁰ When examinations are repeated, diagnostic accuracy approaches 100%.¹¹ *Figure 2* shows a DVT diagnosed using POCUS.

PROCEDURAL GUIDANCE

POCUS is used for guidance in many procedures and has become the standard of care for some procedures (*Table 1*).¹²⁻¹⁷ In central venous catheter placement, ultrasound guidance reduces complications, arterial puncture, and time to completion, and improves success.^{12,13} Ultrasound guidance of thoracentesis and paracentesis reduces the rate of dry taps but not the number of passes or incidence of pneumothorax.^{14,15} Ultrasound guidance reduces bleeding (number needed to treat [NNT] = 391),¹⁵ and prevents failure in paracentesis (NNT = 12) and reduces traumatic lumbar puncture (NNT = 7).¹⁶ For superficial skin abscess drainage, ultrasound guidance reduces treatment failure (NNT = 9).¹⁷

Numerous musculoskeletal procedures are performed with POCUS guidance, including joint and soft tissue aspiration, injections, and nerve blocks. Ultrasonography is becoming a standard of care for some interventions.¹⁸ Ultrasound guidance reduces procedural pain scores by an average of -0.5 to -2 on a 10-point scale for subacromial, bicep tendon sheath, glenohumeral, and knee joint injections.^{19,20} Ultrasound guidance during knee arthrocentesis reduces pain by more than 50%.²¹ In nerve blocks, ultrasound guidance reduces the number of inadequate blocks (NNT = 9), paresthesia (NNT = 11), and vascular puncture (NNT = 14).²² *Table 2* summarizes the benefits of ultrasound guidance in musculoskeletal procedures.¹⁹⁻²³

RESPIRATORY DISTRESS

The bedside lung ultrasound in emergency (BLUE) protocol was developed to categorize findings in acute respiratory distress^{24,25} (*eTable A*). In lung

FIGURE 2

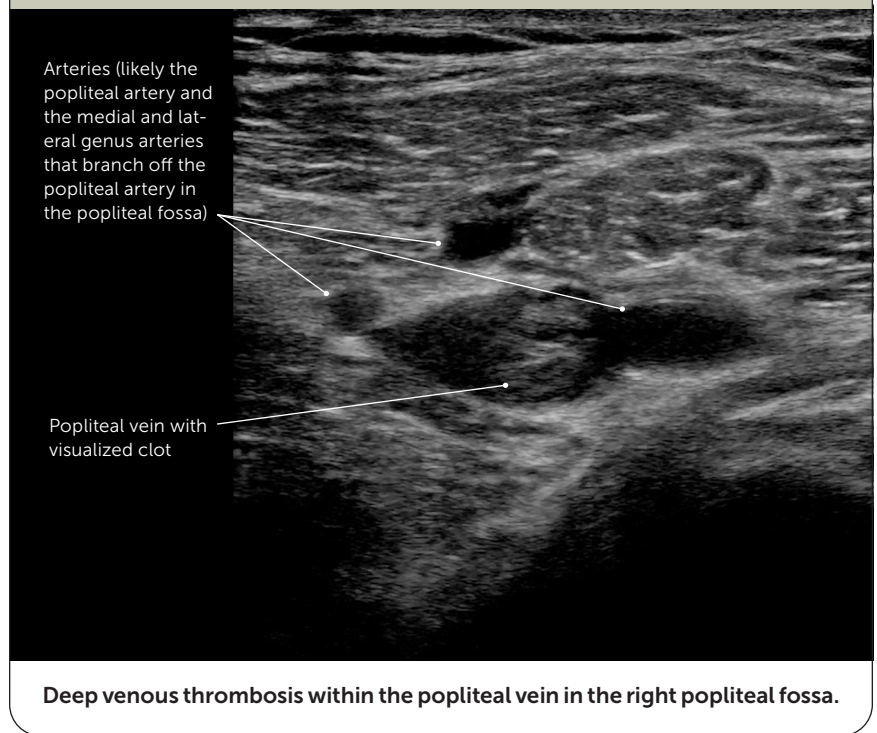


TABLE 1

Ultrasound Guidance for Common Nonmusculoskeletal Procedures

Procedure	Evidence	Patients
Femoral central line	Only significant improvement was an increased likelihood of success with first attempt (NNT = 3) ¹³	224
Internal jugular central line	Reduced complication rate (NNT = 11), improved success rate (NNT = 10), reduced arterial puncture (NNT = 17), and reduced other complications (NNT = 67) while reducing time for the procedure by 30 minutes ¹²	4,340
Lumbar puncture	Prevent failed procedure (NNT = 12); prevented traumatic procedure (NNT = 7) ¹⁶	957
Paracentesis	Reduction of bleeding (NNT = 391) ¹⁵	69,859
Skin and soft tissue abscess incision and drainage	Reduction in failure rate of abscess drainage (NNT = 9) ¹⁷	239
Subclavian central line	Only significant improvement was reduced arterial puncture (NNT = 22) ¹³	499
Thoracentesis	Lower risk of dry tap with ultrasonography (odds ratio = 0.11) but no reduction in number of passes or in pneumothorax ¹⁴	208

NNT = number needed to treat.

Information from references 12-17.

TABLE 2

Ultrasound Use for Musculoskeletal Procedures

Procedure	NNT to prevent missing target	Patient outcome
Biceps tendon sheath injection	2	Average pain score improvement of 1.9 out of 10 and function improvement of 1.1 out of 10 ¹⁹
Carpal tunnel injection	Not reported	Average reduction of 0.5 points in 11-point symptom severity score and no difference in function or electrodiagnostic results ²³
Glenohumeral joint injection	5	Average pain score improvement of 0.6 out of 10 and no functional difference in adhesive capsulitis ¹⁹
Knee arthrocentesis	7	Average procedural pain score reduction of 2.2 out of 10 ²¹
Knee injection	6	26% increase in responders with at least 50% pain reduction ²⁰
Nerve blocks	NA	Prevent inadequate block (NNT = 9), prevent paresthesia around block (NNT = 11), prevent vascular puncture (NNT = 14) ²²
Subacromial injection	20	Average pain score improvement of 1.5 out of 10 at six weeks and functional benefit at six weeks (NNT = 3) ¹⁹

NA = not applicable; NNT = number needed to treat.

Information from references 19–23.

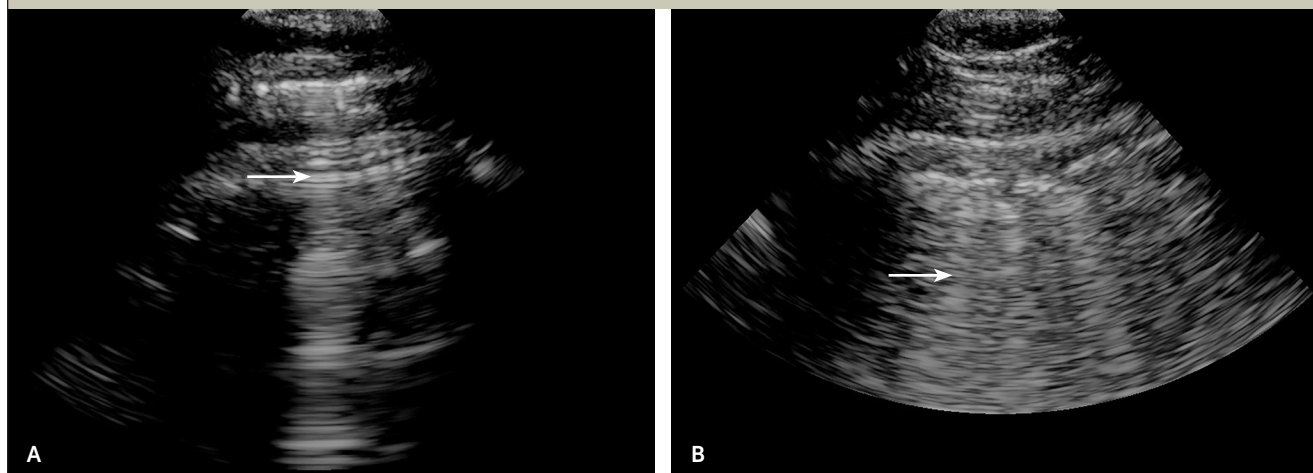
ultrasonography, A lines are artifacts running parallel to pleura in healthy lung tissue (Figure 3A), whereas B lines are comet-tail artifacts found perpendicular to pleura from subpleural edema²⁴ (Figure 3B). Ultrasound findings are combined

for a negative CT angiogram.^{28,29} With a moderate-risk Wells score, a negative lung ultrasound reduces pulmonary embolism probability from 16% to 5% and a positive lung ultrasound increases pulmonary embolism probability to 55%.²⁸

with clinical evaluation; unilateral B lines with fever and cough correlate with pneumonia, and bilateral A lines with wheezing suggest obstructive airway disease given that lung parenchyma is normal in bronchial obstruction.²⁴ POCUS of the lung is more sensitive than plain radiography in diagnosing other conditions, such as pleural effusion (94% sensitivity) and pulmonary contusion (92% sensitivity).^{26,27} POCUS of the lung decreases emergency department diagnostic time by two hours on average compared with standard radiography, computed tomography (CT), or echocardiography.²⁵

Although lung ultrasonography is less accurate than CT angiography for diagnosis of pulmonary embolism, POCUS can be valuable if CT is unavailable or contraindicated. A healthy lung ultrasound has a negative likelihood ratio (LR⁻) of 0.18, compared with a LR⁻ of 0.36 for a low-probability ventilation-perfusion scan and a LR⁻ of 0.11

FIGURE 3



Common lung ultrasound findings. (A) A lines (arrow) run parallel to the probe and the pleura and are a refraction artifact in a normal lung. (B) B lines (arrow) are groupings of comet-tail artifacts running perpendicular to the pleura and reflect subpleural edema.

ROTATOR CUFF TEAR

A Cochrane review of 20 studies of POCUS and formal sonography involving 1,147 shoulders demonstrated ultrasonography can diagnose full-thickness rotator cuff tears with equivalent accuracy to magnetic resonance imaging (MRI).³⁰ For partial-thickness rotator cuff tears and subacromial conditions, ultrasonography is less accurate than MRI.^{30,31} *Table 3* describes the accuracy of ultrasonography for shoulder conditions.³⁰⁻³³ *Figure 4* shows a POCUS scan of a complete rotator cuff tear.³⁴

SKIN AND SOFT TISSUE INFECTIONS

Without imaging, differentiating cellulitis from an abscess can be difficult because clinical examinations can be incorrect in up to 22% of cases, delaying resolution and increasing risk.³⁵ A systematic review showed that POCUS reduces the failure-to-diagnose rate because negative scan results have a LR- of 0.05 for abscess.³⁶ POCUS also decreases inappropriate incision and drainage of cellulitis without abscess by up to 20% compared with clinical examinations.³⁶ One study demonstrated 86% sensitivity for diagnosing abscess with POCUS, compared with 77% for CT.³⁷ Ultrasonography also effectively rules out foreign bodies that can delay healing. In a small study, a normal POCUS scan had a 96% negative predictive value for subcutaneous foreign bodies.³⁸ *Figure 5* shows POCUS scans of cellulitis and abscess.

Clinical Conditions with Moderate Evidence Supporting Use of POCUS

APPENDICITIS

POCUS has been studied to reduce CT imaging in suspected appendicitis. The pooled sensitivity of POCUS for appendicitis is 91% when performed by surgeons and physicians who work in the emergency department.³⁹ A meta-analysis of POCUS performed by emergency department physicians showed 84% sensitivity and 91% specificity, with higher accuracy in children.⁴⁰ Ultrasonography can confirm appendicitis; however, a negative ultrasound does not rule out disease because perforated appendicitis is often missed

TABLE 3

Musculoskeletal Ultrasonography of the Shoulder Compared with MRI

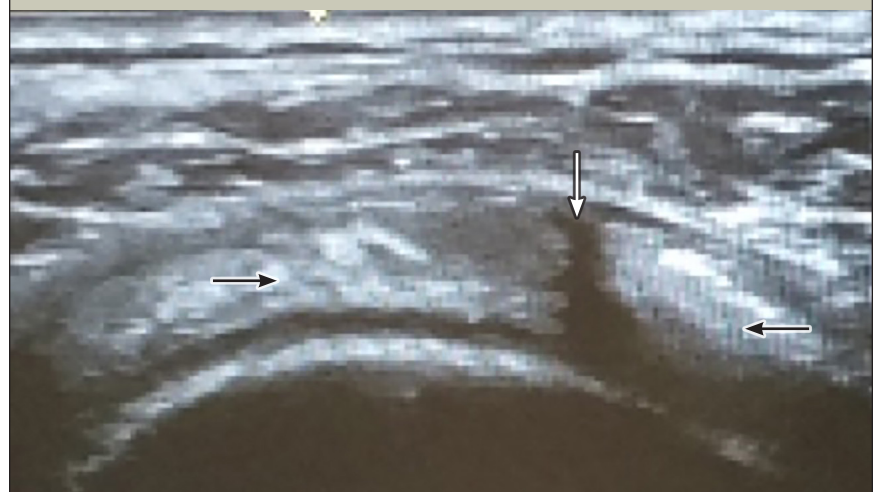
Condition	Musculoskeletal ultrasonography		MRI	
	Sensitivity	Specificity	Sensitivity	Specificity
Calcifying tendinitis	100%	85% to 98%	98%	96%
Full thickness rotator cuff tear	92%*	93%	94%*	93%
Partial thickness rotator cuff tear	52%	93%	74%	93%
Subacromial bursitis	79% to 81%	94% to 98%	Not reported, higher than ultrasonography	

MRI = magnetic resonance imaging.

*—A Cochrane review found these sensitivities were equivalent.

Information from references 30-33.

FIGURE 4



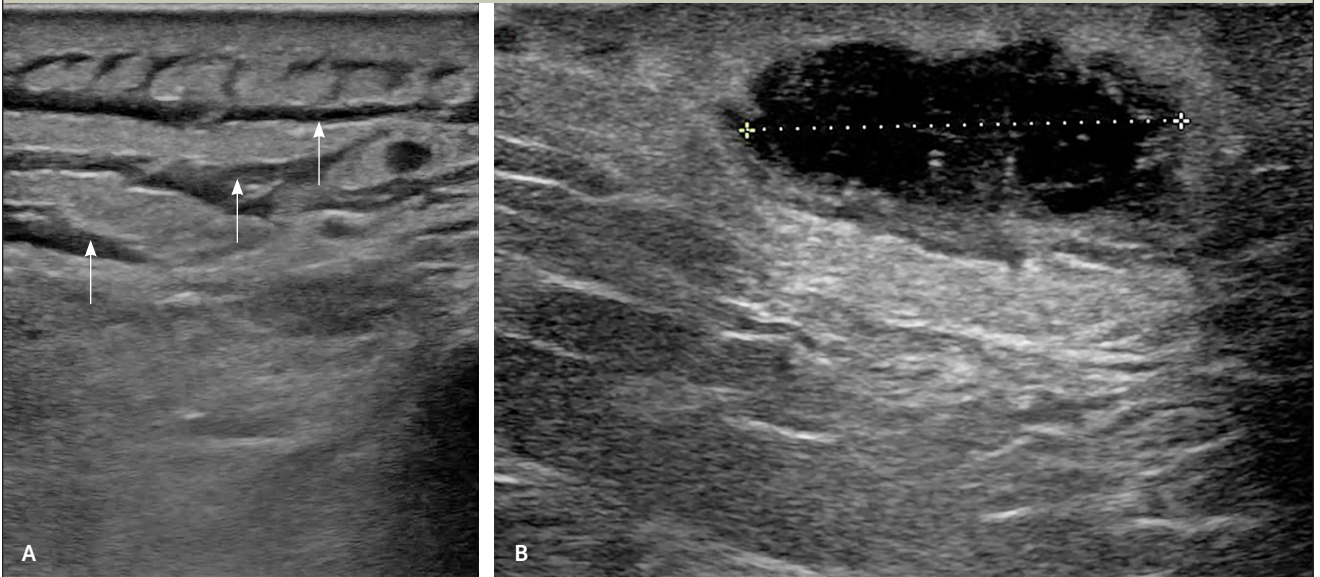
Supraspinatus muscle (black arrows); complete tear (white arrow).

because of findings including loculated fluid collections, dilated bowel, appendicoliths, and increased liver echogenicity.⁴¹ In children, a negative ultrasound with a low-risk clinical decision score sufficiently rules out appendicitis.⁴²

BILIARY COLIC

Biliary ultrasonography aids cholecystitis diagnosis in suspected biliary colic. POCUS has 90% sensitivity and 88% specificity compared with CT or surgical findings.⁴³ In comparison, CT has 92% sensitivity.⁴⁴ Diagnostic accuracy is nearly 100% when gallstones are found with gallbladder wall thickening and pericholecystic fluid or sludge (*Table 4*).⁴⁵ POCUS is highly accurate at diagnosing gallstones; however,

FIGURE 5



Ultrasonography of skin and soft-tissue infection. (A) Cellulitis, with scattered fluid pockets in a cobblestoning pattern (arrows) but without a distinct fluid collection. (B) Abscess (2.7 cm) with fluid collection in the subcutaneous fat.

cholecystitis occurs without stones in 14% of cases.⁴⁶ Figure 6 shows biliary POCUS findings.

BOWEL PERFORATION

Free abdominal air can create ultrasound artifacts, including anterior echogenic lines, and internal echoes within fluid and resonance artifacts. In one study, POCUS had 92% sensitivity in the detection of free air compared with 78% for upright chest radiography; both had 53% specificity.⁴⁷

DECREASED CARDIAC EJECTION FRACTION

Focused cardiac ultrasound sensitivity for decreased cardiac ejection fraction varies from 74% to 94%.⁴⁸ In most studies, cardiac ultrasonography is less sensitive for the diagnosis of acute decompensated heart failure than the 88% sensitivity of lung ultrasonography.⁴⁹ Yet, evidence supports the use of focused cardiac ultrasonography for gross cardiac function estimation. A study of 50 patients admitted for acute decompensated heart failure showed that residents found ejection fraction in less than 40% of patients with 94% sensitivity and specificity.⁵⁰ In another study, emergency medicine residents

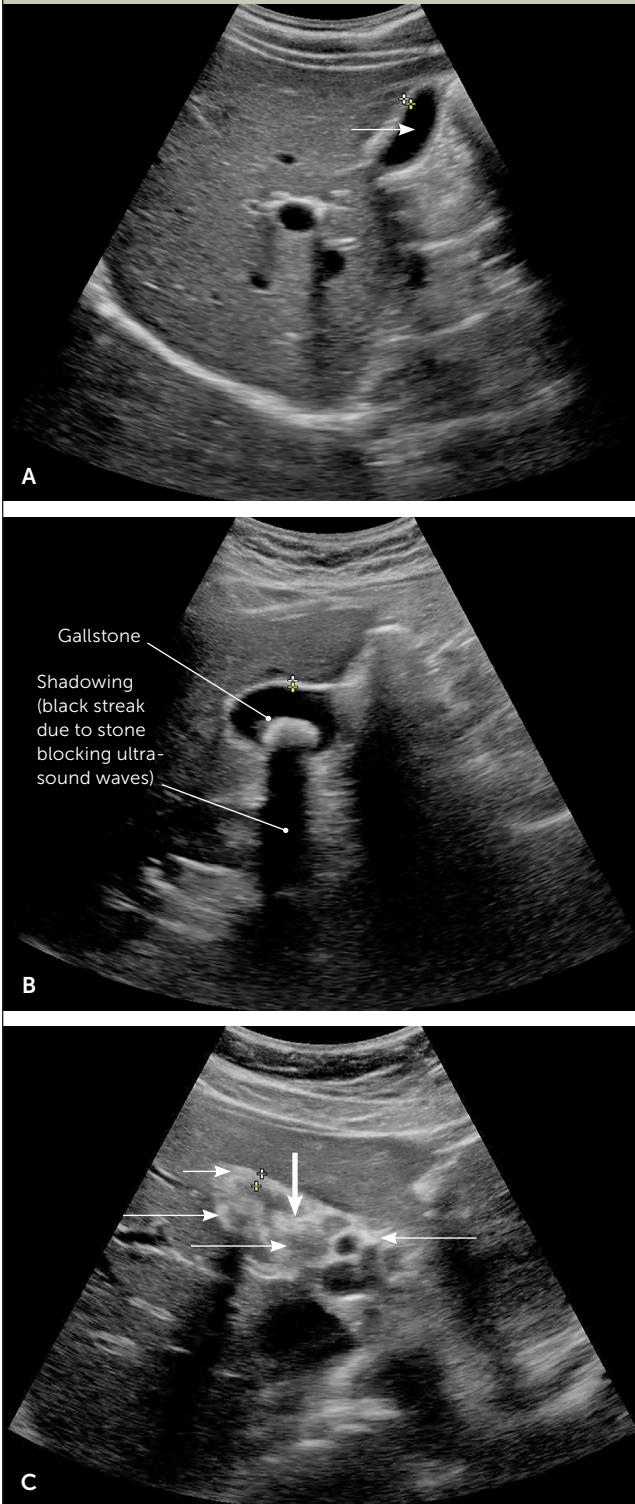
TABLE 4

Accuracy of Point-of-Care Ultrasonography for Cholecystitis

	Sensitivity	Specificity
Individual findings		
Gallstones	84%	49%
Gallbladder wall thickening	54%	92%
Pericholecystic fluid	23%	98%
Sludge in gall bladder	23%	91%
Common bile duct dilation	21%	88%
Combinations of findings		
Gallstones and gallbladder wall thickening	54%	93%
Gallstones and sludge and gallbladder wall thickening	23%	100%
Gallstones and common bile duct dilation and gallbladder wall thickening	16%	99%
Gallstones and pericholecystic fluid and gallbladder wall thickening	16%	100%

Information from reference 45.

FIGURE 6



Gallbladder ultrasound image. (A) Normal gallbladder (arrow) without visualized stones or wall thickening. (B) Gallstone and posterior shadowing without gallbladder changes. (C) Cholecystitis demonstrated by multiple gallstones (long arrows), a thickened gallbladder wall (short arrow), and visualized sludge (thick arrow).

missed decreased systolic function one-half of the time.⁵¹ E-point septal separation (EPSS) is the measurement of the minimal separation of the anterior mitral valve leaflet and the ventricular septum, which corresponds to ejection fraction. In a study with 80 patients, EPSS diagnosed ejection fraction at 30% or less with 100% sensitivity but only 44% positive predictive value, attributed to false positives.⁵²

ELEVATED INTRACRANIAL PRESSURE

Optic nerve sheath diameter measured with POCUS enables noninvasive detection of elevated intracranial pressure, with 90% sensitivity and 85% specificity.⁵³

INTERNAL BLEEDING IN TRAUMA

The focused assessment with sonography for trauma (FAST) examination represents one of the first POCUS protocols and has replaced diagnostic peritoneal lavage (DPL) for detection of internal bleeding. A Cochrane review found 74% sensitivity and 96% specificity for thoracoabdominal bleeding.⁵⁴

OBSTETRIC AND GYNECOLOGIC CONDITIONS

Ultrasonography is standard in pregnancy management. Many obstetric parameters, such as first-trimester dating, amniotic fluid levels, fetal position, and antepartum testing, are defined with ultrasonography. Ultrasonography is required to diagnose placental abnormalities. Visualization of intrauterine pregnancy rules out ectopic pregnancy with a LR- of 0.08.⁵⁵

A Cochrane review found that screening the umbilical artery with Doppler ultrasonography reduces the risk of perinatal death (number needed to screen = 203) when performed during the third trimester in a high-risk pregnancy attributed to diabetes mellitus, hypertensive disorders, or other issues increasing perinatal mortality risk.⁵⁶ The review could not define which intervention or protocol triggered by an abnormal Doppler study is the preferred method to reduce mortality. Recent evidence verifies ultrasound screening at 36 weeks of gestation is effective in determining breech presentation.⁵⁷

POCUS is used to evaluate pelvic pain and vaginal bleeding in women; however, accuracy has not been studied. POCUS effectively evaluates intrauterine device placement, but accuracy has not been assessed.⁵⁸

PERICARDIAL EFFUSION

Focused cardiac ultrasonography includes limited cardiac views and specific measurements to obtain functional information on the dynamic heart. Focused cardiac ultrasonography is most effective in detecting pericardial effusion, with 100% sensitivity in one study.⁵⁹ Reproducibility of focused cardiac ultrasonography was questioned by another study

demonstrating that residents in emergency medicine miss pericardial effusion one-half of the time.⁵¹ Demonstration of effusion and tamponade can be lifesaving despite limitations.

RENAL COLIC

POCUS can identify urolithiasis and hydronephrosis with 70% sensitivity and 75% specificity in suspected renal colic. Finding at least moderate hydronephrosis increases specificity to 94%.⁶⁰ Hydronephrosis identification is improved with increased physician ultrasound experience.⁶¹ A large multicenter trial showed that the emergency department POCUS evaluation of suspected urolithiasis produced equivalent clinical outcomes to CT evaluation.⁶² *Figure 7* shows hydronephrosis attributed to urolithiasis on renal ultrasonography.

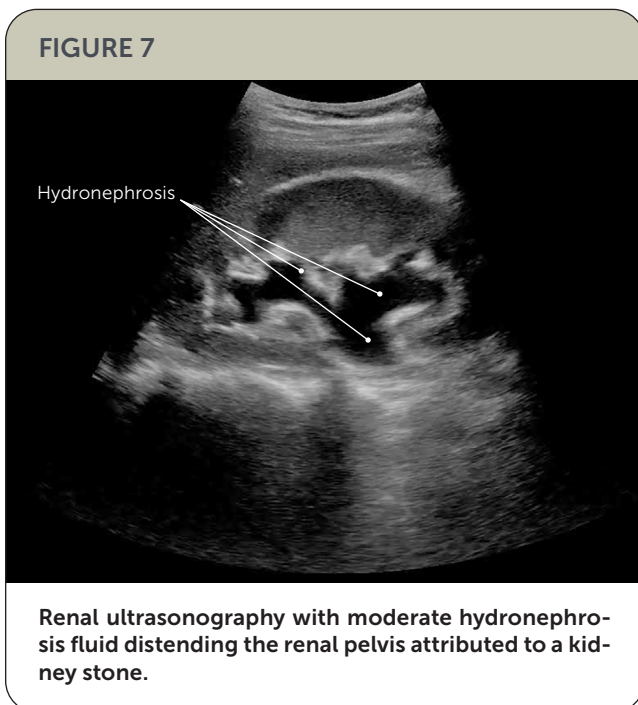
RETINAL DETACHMENT

Retinal detachment can be diagnosed with 97% sensitivity, but 83% specificity because retinal detachment can be confused with a benign vitreal detachment in older adults.⁶³

Clinical Conditions with Limited Evidence Supporting Use of POCUS

SCROTAL PAIN

A study with 36 patients showed that a POCUS examination of acute scrotal pain identified testicular torsion with 95% sensitivity and 94% specificity.⁶⁴



MUSCULOSKELETAL CONDITIONS OUTSIDE THE SHOULDER

Ultrasonography is often used to diagnose musculoskeletal conditions because of its ability to localize patient conditions and perform a dynamic assessment, but data comparing musculoskeletal ultrasonography to other radiologic modalities is limited. Most studies are small and compare ultrasonography to clinical examination findings, but the evidence is emerging for soft tissue structures.⁶⁵ A systematic review found plantar fascial thickness of 4 mm or greater on ultrasonography is diagnostic for plantar fasciitis.⁶⁶ In a study of 45 patients, complete and partial distal biceps tendon tears were diagnosed using POCUS with 95% sensitivity compared with surgical findings.⁶⁷

FRACTURE

Ultrasonography is less accurate than plain radiography for extremity fractures but is useful when radiography is unavailable.⁶⁸ POCUS can diagnose extremity fractures with 85% sensitivity and 73% specificity compared with plain radiography.⁶⁹ A small study suggests POCUS diagnoses rib fractures with 63% sensitivity, with feasibility limited by pain.⁷⁰

Training and Competency

POCUS is being integrated into medical school and residency curricula. The American Academy of Family Physicians recommends ultrasound guidelines emphasizing a faculty champion with curricula including didactics, hands-on learning, and assessment.⁷¹ These guidelines recommend 150 to 300 reviewed scans for general competency, 25 to 50 scans for any specific examination, and five to 10 scans for ultrasound procedural guidance, and are based on emergency medicine requirements.⁷¹ For musculoskeletal applications, the American Institute of Ultrasound in Medicine recommends 50 diagnostic and 50 ultrasound-guided procedures.¹⁸

For credentialed physicians, POCUS accreditation is less clear. Numerous instructional resources teaching ultrasound skills are available, including many that are free (*Table 5^{71,72}*). Certificate programs for nonmusculoskeletal POCUS are offered by the American College of Chest Physicians and the Alliance for Physician Certification and Advancement. The American Institute of Ultrasound in Medicine and the American College of Radiology offer accreditations in musculoskeletal ultrasonography.^{18,71,72} The American Board of Family Medicine does not currently recognize certification in POCUS, so credentialing decisions are deferred to privileging hospitals.⁷¹ The American Institute of Ultrasound in Medicine recommends 50 procedures annually and dedicated continuing medical education for physicians to maintain ultrasound skills.¹⁸ No other organizations have specific recommendations for maintaining privileges.

TABLE 5

Resources for Learning Point-of-Care Ultrasonography

Resource	Cost	Comments
5 Min Sono http://5minsono.com/	Free	Collection of short videos demonstrating examinations; podcast
American College of Emergency Physicians Sonoguide https://www.acep.org/sonoguide/introduction.html	Free	Web-based curriculum of test-based descriptions with photos and videos; referenced by Ultrasound Ninja curriculum
American Institute of Ultrasound in Medicine https://www.aium.org	Prices vary by course and continuing medical education credits	Collection of continuing medical education materials for ultrasound certification; credentialing program recommending 50 credits in each body area
European Society of Musculoskeletal Radiology https://www.essr.org	Free	Webinars for radiology topics; not focused solely on ultrasonography
Massachusetts General Hospital Emergency Ultrasound Educational Website https://sites.google.com/site/mghedus/home	Free	Free video tutorials on emergency ultrasound topics
Point-of-Care Ultrasound Certification Academy https://pocus.org/	\$125 for fundamental certification, \$150 for each of 10 clinical area certificates, \$625 for emergency medicine certification with seven clinical areas	Certification programs including examination and certificate
Society for Academic Emergency Medicine https://www.saem.org/education/saem-online-academic-resources/topics/ultrasound	Varies by membership level	Faculty performing and teaching emergency ultrasonography; includes modules for physicians at different levels of experience
SonoSpot: Topics in Bedside Ultrasound http://sonospot.com/	Free	Tutorials with verbal descriptions for probe placements and photos; short videos of ultrasound images showing expected results
Ultrasound Ninja http://www.ultrasoundninja.com/	Free	Emergency medicine ultrasound program; curriculum consisting of podcasts and references for each curricular element; free e-book
Virtual Transthoracic Echocardiography Website http://pie.med.utoronto.ca/TTE/index.htm	Free	Tutorial for performing transthoracic echocardiography

Information from references 71 and 72.

Editor's Note: Dr. Arnold is the medical editing fellow for *AFP*.

Data Sources: A PubMed search was completed using the key terms point-of-care ultrasound, focused cardiac ultrasound, ultrasound credentialing, musculoskeletal ultrasound, and

bedside ultrasound. After the significant injuries and diagnoses were identified, searches were performed for each modality. The searches included systemic reviews, meta-analyses, randomized controlled trials, and review articles. Also searched were the Cochrane database, Essential Evidence Plus, and Clinical Evidence. Also, references in these resources were searched. Search dates: January to March 2019, June 2019, and December 2019.

The views expressed in this article are those of the authors' and do not reflect the official policy or position of the Department of the Army, Department of the Navy, Department of the Air Force, Uniformed Services University of the Health Sciences, Department of Defense, or the U.S. government.

The Authors

MICHAEL J. ARNOLD, MD, FAAFP, is an assistant professor in the Department of Family Medicine at the Uniformed Services University of the Health Sciences, Bethesda, Md.

CHRISTOPHER E. JONAS, DO, FAAFP, CAQSM, is an associate professor in the Department of Family Medicine at the Uniformed Services University of the Health Sciences.

RACHEL E. CARTER, MD, MAS, RDMS, is head of the Department of Family Medicine at the Naval Hospital Jacksonville (Fla.), and an assistant professor at the Uniformed Services University of the Health Sciences.

Address correspondence to Michael J. Arnold, MD, FAAFP, Uniformed Services University of the Health Sciences, 4301 Jones Bridge Rd., Bethesda, MD 20814 (email: michael.arnold@usuhs.edu). Reprints are not available from the authors.

References

1. Guirguis-Blake JM, Beil TL, Sun X, et al. Primary care screening for abdominal aortic aneurysm: a systematic evidence review for the U.S. Preventive Services Task Force [Internet]. Agency for Healthcare Research and Quality. 2014;Report No. 14-05202-EF-1.
2. Ali MU, Fitzpatrick-Lewis D, Kenny M, et al. A systematic review of short-term vs. long-term effectiveness of one-time abdominal aortic aneurysm screening in men with ultrasound. *J Vasc Surg.* 2018;68(2):612-623.
3. Ruff AL, Teng K, Hu B, et al. Screening for abdominal aortic aneurysms in outpatient primary care clinics. *Am J Med.* 2015;128(3):283-288.
4. Bailey RP, Ault M, Greengold NL, et al. Ultrasonography performed by primary care residents for abdominal aortic aneurysm screening. *J Gen Intern Med.* 2001;16(12):845-849.
5. Blois B. Office-based ultrasound screening for abdominal aortic aneurysm. *Can Fam Physician.* 2012;58(3):e172-e178.
6. Rubano E, Mehta N, Caputo W, et al. Systematic review: emergency department bedside ultrasonography for diagnosing suspected abdominal aortic aneurysm. *Acad Emerg Med.* 2013;20(2):128-138.
7. Mai T, Woo MY, Boles K, et al. Point-of-care ultrasound performed by a medical student compared to physical examination by vascular surgeons in the detection of abdominal aortic aneurysms. *Ann Vasc Surg.* 2018;52:15-21.
8. Sisó-Almirall A, Kostov B, Navarro González M, et al. Abdominal aortic aneurysm screening program using hand-held ultrasound in primary healthcare. *PLoS One.* 2017;12(4):e0176877.
9. Pomeroy F, Dentali F, Borretta V, et al. Accuracy of emergency physician-performed ultrasonography in the diagnosis of deep-vein thrombosis. *Thromb Haemost.* 2013;109(1):137-145.
10. Mumoli N, Vitale J, Giorgi-Pierfranceschi M, et al.; PRACTICUS Study Investigators. General practitioner-performed compression ultrasonography for diagnosis of deep vein thrombosis of the leg. *Ann Fam Med.* 2017;15(6):535-539.
11. Lim W, Le Gal G, Bates SM, et al. American Society of Hematology 2018 guidelines for management of venous thromboembolism: diagnosis of venous thromboembolism. *Blood Adv.* 2018;2(22):3226-3256.

12. Brass P, Hellmich M, Kolodziej L, et al. Ultrasound guidance versus anatomical landmarks for internal jugular vein catheterization. *Cochrane Database Syst Rev.* 2015;(1):CD006962.
13. Brass P, Hellmich M, Kolodziej L, et al. Ultrasound guidance versus anatomic landmarks for subclavian or femoral vein catheterization. *Cochrane Database Syst Rev.* 2015;(1):CD011447.
14. Wilcox ME, Chong CA, Stanbrook MB, et al. Does this patient have an exudative pleural effusion? *JAMA.* 2014;311(23):2422-2431.
15. Mercaldi CJ, Lanes SF. Ultrasound guidance decreases complications and improves the cost of care among patients undergoing thoracentesis and paracentesis. *Chest.* 2013;143(2):532-538.
16. Gottlieb M, Holladay D, Peksa GD. Ultrasound-assisted lumbar puncture. *Acad Emerg Med.* 2019;26(1):85-96.
17. Gaspari RJ, Sanseverino A. Ultrasound-guided drainage for pediatric soft tissue abscesses decreases clinical failure rates compared to drainage without ultrasound. *J Ultrasound Med.* 2018;37(1):131-136.
18. American Institute of Ultrasound in Medicine. Training guidelines for physicians and chiropractors who perform ultrasound-guided musculoskeletal interventional procedures. Accessed April 1, 2019. <https://www.aium.org/officialStatements/61>
19. Aly AR, Rajasekaran S, Ashworth N. Ultrasound-guided shoulder girdle injections are more accurate and more effective than landmark-guided injections. *Br J Sports Med.* 2015;49(16):1042-1049.
20. Berkoff DJ, Miller LE, Block JE. Clinical utility of ultrasound guidance for intra-articular knee injections. *Clin Interv Aging.* 2012;7:89-95.
21. Wu T, Dong Y, Song Hx, et al. Ultrasound-guided versus landmark in knee arthrocentesis. *Semin Arthritis Rheum.* 2016;45(5):627-632.
22. Lewis SR, Price A, Walker KJ, et al. Ultrasound guidance for upper and lower limb blocks. *Cochrane Database Syst Rev.* 2015;(9):CD006459.
23. Babaei-Ghazani A, Roomizadeh P, Forogh B, et al. Ultrasound-guided versus landmark-guided local corticosteroid injection for carpal tunnel syndrome. *Arch Phys Med Rehabil.* 2018;99(4):766-775.
24. Lichtenstein DA. BLUE-protocol and FALLS-protocol: two applications of lung ultrasound in the critically ill. *Chest.* 2015;147(6):1659-1670.
25. Zanobetti M, Scorpiniti M, Gigli C, et al. Point-of-care ultrasonography for evaluation of acute dyspnea in the ED. *Chest.* 2017;151(6):1295-1301.
26. Yousefifard M, Baikpour M, Ghelichkhani P, et al. Screening performance characteristic of ultrasonography and radiography in detection of pleural effusion. *Emerg (Tehran).* 2016;4(1):1-10.
27. Hosseini M, Ghelichkhani P, Baikpour M, et al. Diagnostic accuracy of ultrasonography and radiography in detection of pulmonary contusion. *Emerg (Tehran).* 2015;3(4):127-136.
28. Jiang L, Ma Y, Zhao C, et al. Role of transthoracic lung ultrasonography in the diagnosis of pulmonary embolism. *PLoS One.* 2015;10(6):e0129909.
29. Roy PM, Colombet I, Durieux P, et al. Systematic review and meta-analysis of strategies for the diagnosis of suspected pulmonary embolism. *BMJ.* 2005;331(7511):259.
30. Lenza M, Buchbinder R, Takwoingi Y, et al. Magnetic resonance imaging, magnetic resonance arthrography and ultrasonography for assessing rotator cuff tears in people with shoulder pain for whom surgery is being considered. *Cochrane Database Syst Rev.* 2013;(9):CD009020.
31. Ottenheim RP, Jansen MJ, Staal JB, et al. Accuracy of diagnostic ultrasound in patients with suspected subacromial disorders [published correction appears in *Arch Phys Med Rehabil.* 2010;91(12):1962-1963]. *Arch Phys Med Rehabil.* 2010;91(10):1616-1625.
32. Ardic F, Kahraman Y, Kacar M, et al. Shoulder impingement syndrome: relationships between clinical, functional, and radiologic findings. *Am J Phys Med Rehabil.* 2006;85(1):53-60.
33. Nörenberg D, Ebersberger HU, Walter T, et al. Diagnosis of calcific tendinitis of the rotator cuff by using susceptibility-weighted MR imaging. *Radiology.* 2016;278(2):475-484.

34. Wikimedia Commons. Full thickness rotator cuff tear ultrasound. Accessed June 30, 2019. https://commons.wikimedia.org/wiki/File:Full_thickness_rotator_cuff_tear_ultrasound.jpg
35. Sivitz AB, Lam SH, Ramirez-Schrempp D, et al. Effect of bedside ultrasound on management of pediatric soft-tissue infection. *J Emerg Med*. 2010;39(5):637-643.
36. Barbic D, Chenkin J, Cho DD, et al. In patients presenting to the emergency department with skin and soft tissue infections what is the diagnostic accuracy of point-of-care ultrasonography for the diagnosis of abscess compared to the current standard of care [published correction appears in *BMJ Open*. 2017;7(9):e013688]? *BMJ Open*. 2017;7(1):e013688.
37. Gaspari R, Dayno M, Briones J, et al. Comparison of computerized tomography and ultrasound for diagnosing soft tissue abscesses. *Crit Ultrasound J*. 2012;4(1):5.
38. Nienaber A, Harvey M, Cave G. Accuracy of bedside ultrasound for the detection of soft tissue foreign bodies by emergency doctors. *Emerg Med Australas*. 2010;22(1):30-34.
39. Matthew Fields J, Davis J, Alsup C, et al. Accuracy of point-of-care ultrasonography for diagnosing acute appendicitis. *Acad Emerg Med*. 2017;24(9):1124-1136.
40. Lee SH, Yun SJ. Diagnostic performance of emergency physician-performed point-of-care ultrasonography for acute appendicitis. *Am J Emerg Med*. 2019;37(4):696-705.
41. Tulin-Silver S, Babb J, Pinkney L, et al. The challenging ultrasound diagnosis of perforated appendicitis in children: constellations of sonographic findings improve specificity. *Pediatr Radiol*. 2015;45(6):820-830.
42. Bachur RG, Callahan MJ, Monuteaux MC, et al. Integration of ultrasound findings and a clinical score in the diagnostic evaluation of pediatric appendicitis. *J Pediatr*. 2015;166(5):1134-1139.
43. Ross M, Brown M, McLaughlin K, et al. Emergency physician-performed ultrasound to diagnose cholelithiasis. *Acad Emerg Med*. 2011;18(3):227-235.
44. Fagenholz PJ, Fuentes E, Kaafarani H, et al. Computed tomography is more sensitive than ultrasound for the diagnosis of acute cholecystitis. *Surg Infect (Larchmt)*. 2015;16(5):509-512.
45. Jang TB, Ruggeri W, Kaji AH. The predictive value of specific emergency sonographic signs for cholecystitis. *J Med Ultrasound*. 2013;21(1):29-31.
46. Villar J, Summers SM, Menchine MD, et al. The absence of gallstones on point-of-care ultrasound rules out acute cholecystitis. *J Emerg Med*. 2015;49(4):475-480.
47. Chen SC, Yen ZS, Wang HP, et al. Ultrasonography is superior to plain radiography in the diagnosis of pneumoperitoneum. *Br J Surg*. 2002;89(3):351-354.
48. Fiorelli EM, Casella F, Torzillo D, et al. Bedside focused cardiac ultrasound in the evaluation of systolic dysfunction. *Intern Emerg Med*. 2017;12(2):241-245.
49. Martindale JL, Wakai A, Collins SP, et al. Diagnosing acute heart failure in the emergency department. *Acad Emerg Med*. 2016;23(3):223-242.
50. Razi R, Estrada JR, Doll J, et al. Bedside hand-carried ultrasound by internal medicine residents versus traditional clinical assessment for the identification of systolic dysfunction in patients admitted with decompensated heart failure. *J Am Soc Echocardiogr*. 2011;24(12):1319-1324.
51. Thomas-Mohtat R, Sable C, Breslin K, et al. Interpretation errors in focused cardiac ultrasound by novice pediatric emergency medicine fellow sonologists. *Crit Ultrasound J*. 2018;10(1):35.
52. McKaigney CJ, Krantz MJ, La Rocque CL, et al. E-point septal separation: a bedside tool for emergency physician assessment of left ventricular ejection fraction. *Am J Emerg Med*. 2014;32(6):493-497.
53. Dubourg J, Javouhey E, Geeraerts T, et al. Ultrasonography of optic nerve sheath diameter for detection of raised intracranial pressure. *Intensive Care Med*. 2011;37(7):1059-1068.
54. Stengel D, Leisterer J, Ferrada P, et al. Point-of-care ultrasonography for diagnosing thoracoabdominal injuries in patients with blunt trauma. *Cochrane Database Syst Rev*. 2018;(12):CD012669.
55. Stein JC, Wang R, Adler N, et al. Emergency physician ultrasonography for evaluating patients at risk for ectopic pregnancy. *Ann Emerg Med*. 2010;56(6):674-683.
56. Alfirevic Z, Stampalija T, Dowswell T. Fetal and umbilical Doppler ultrasound in high-risk pregnancies. *Cochrane Database Syst Rev*. 2017;(6):CD007529.
57. Wastlund D, Moraitis AA, Dacey A, et al. Screening for breech presentation using universal late-pregnancy ultrasonography. *PLoS Med*. 2019;16(4):e1002778.
58. Peri N, Graham D, Levine D. Imaging of intrauterine contraceptive devices. *J Ultrasound Med*. 2007;26(10):1389-1401.
59. Riera A, Weeks B, Emerson BL, et al. Evaluation of a focused cardiac ultrasound protocol in a pediatric emergency department. *Pediatr Emerg Care*. 2018. Accessed June 30, 2019. https://journals.lww.com/pec-online/Abstract/publishahead/Evaluation_of_a_Focused_Cardiac_Ultrasound.98433.aspx
60. Wong C, Teitge B, Ross M, et al. The accuracy and prognostic value of point-of-care ultrasound for nephrolithiasis in the emergency department. *Acad Emerg Med*. 2018;25(6):684-698.
61. Herbst MK, Rosenberg G, Daniels B, et al. Effect of provider experience on clinician-performed ultrasonography for hydronephrosis in patients with suspected renal colic. *Ann Emerg Med*. 2014;64(3):269-276.
62. Smith-Bindman R, Aubin C, Bailitz J, et al. Ultrasonography versus computed tomography for suspected nephrolithiasis. *N Engl J Med*. 2014;371(12):1100-1110.
63. Vrablik ME, Snead GR, Minnigan HJ, et al. The diagnostic accuracy of bedside ocular ultrasonography for the diagnosis of retinal detachment. *Ann Emerg Med*. 2015;65(2):199-203.e1.
64. Blaivas M, Sierzinski P, Lambert M. Emergency evaluation of patients presenting with acute scrotum using bedside ultrasonography. *Acad Emerg Med*. 2001;8(1):90-93.
65. Finnoff JT, Hall MM, Adams E, et al.; American Medical Society for Sports Medicine. Interventional musculoskeletal ultrasound in sports medicine. *Clin J Sport Med*. 2015;25(1):6-22.
66. McMillan AM, Landorf KB, Barrett JT, et al. Diagnostic imaging for chronic plantar heel pain. *J Foot Ankle Res*. 2009;2:32.
67. Lobo Lda G, Fessell DP, Miller BS, et al. The role of sonography in differentiating full versus partial distal biceps tendon tears. *AJR Am J Roentgenol*. 2013;200(1):158-162.
68. Situ-LaCasse E, Grieger RW, Crabbe S, et al. Utility of point-of-care musculoskeletal ultrasound in the evaluation of emergency department musculoskeletal pathology. *World J Emerg Med*. 2018;9(4):262-266.
69. Joshi N, Lira A, Mehta N, et al. Diagnostic accuracy of history, physical examination, and bedside ultrasound for diagnosis of extremity fractures in the emergency department. *Acad Emerg Med*. 2013;20(1):1-15.
70. Lalande É, Guimont C, Émond M, et al. Feasibility of emergency department point-of-care ultrasound for rib fracture diagnosis in minor thoracic injury. *CJEM*. 2017;19(3):213-219.
71. AAFP Reprint No. 290D. Recommended curriculum guidelines for family medicine residents: point of care ultrasound. 2016. Accessed March 12, 2019. https://www.aafp.org/dam/AAFP/documents/medical_education_residency/program_directors/Reprint290D_POCUS.pdf
72. American College of Radiology. Practice parameter for the performance of the musculoskeletal ultrasound examination. Accessed March 19, 2019. <https://www.acr.org/-/media/ACR/Files/Practice-Parameters/US-MSK.pdf?la=en>

eTABLE A

Bedside Lung Ultrasound Evaluation (BLUE) Protocol for Respiratory Distress

Diagnosis	Lung ultrasound findings	Sensitivity	Specificity	Positive likelihood ratio	Negative likelihood ratio
Asthma or chronic obstructive pulmonary disease	A lines (healthy lung)	87%	96%	22	0.14
Fluid overload	B lines	88%	96%	22	0.12
Pneumonia	One of the following findings: B lines with no lung sliding* B lines in one lung only Visualized area of consolidated lung	88%	92%	10	0.13
Pneumothorax	A lines with no lung sliding* and a possible focal area of lung consolidation	88%	100%	4,600	0.12
Pulmonary embolism	A lines (normal lung) with diagnosed deep venous thrombosis	40%	99.9%	345	0.60

*—Lung sliding is visualized movement of the lung tissue at the pleura against the chest wall.

Information from:

Lichtenstein DA. BLUE-protocol and FALLS-protocol: two applications of lung ultrasound in the critically ill. *Chest*. 2015;147(6):1659-1670.

Zanobetti M, Scorpiniti M, Gigli C, et al. Point-of-care ultrasonography for evaluation of acute dyspnea in the ED. *Chest*. 2017;151(6):1295-1301.